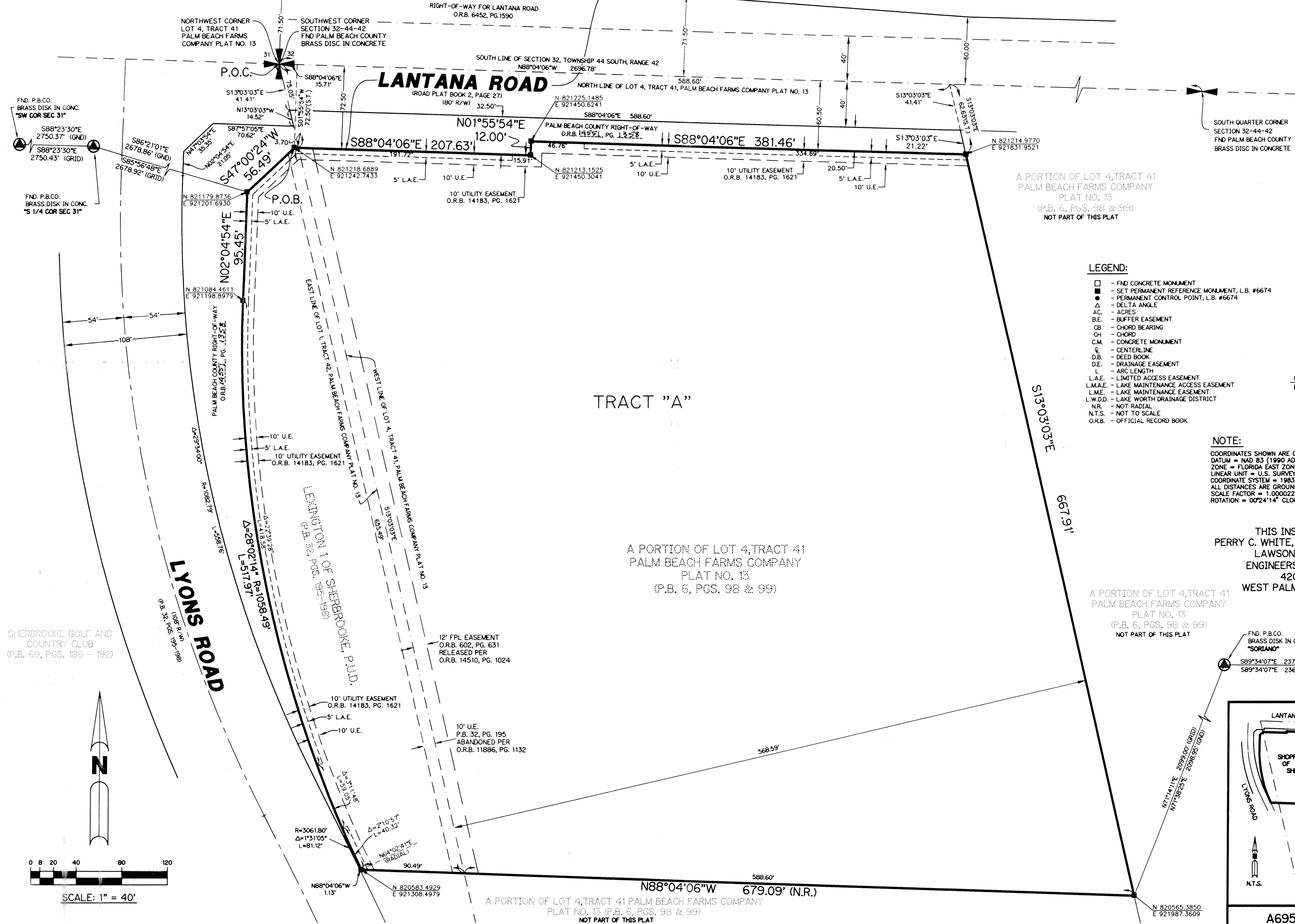


# SHOPPES OF SHERBROOKE, M.U.P.D.

A REPLAT OF A PORTION OF LOT 4, TRACT 41, PALM BEACH FARMS COMPANY PLAT NO. 13, ACCORDING TO THE PLAT THEREOF AS RECORDED IN PLAT BOOK 6, PAGES 98 AND 99 OF THE PUBLIC RECORDS OF PALM BEACH COUNTY, FLORIDA TOGETHER WITH A REPLAT OF A PORTION OF LEXINGTON I OF SHERBROOKE, P.U.D., ACCORDING TO THE PLAT THEREOF AS RECORDED IN PLAT BOOK 32, PAGES 195 THROUGH 198 OF THE PUBLIC RECORDS OF PALM BEACH COUNTY, FLORIDA, ALL LYING AND BEING WITHIN HIATUS OF TOWNSHIP 44 1/2 SOUTH, RANGE 42 EAST, PALM BEACH COUNTY, FLORIDA.

SHEET 2 OF 2 JULY, 2002



### LEGEND:

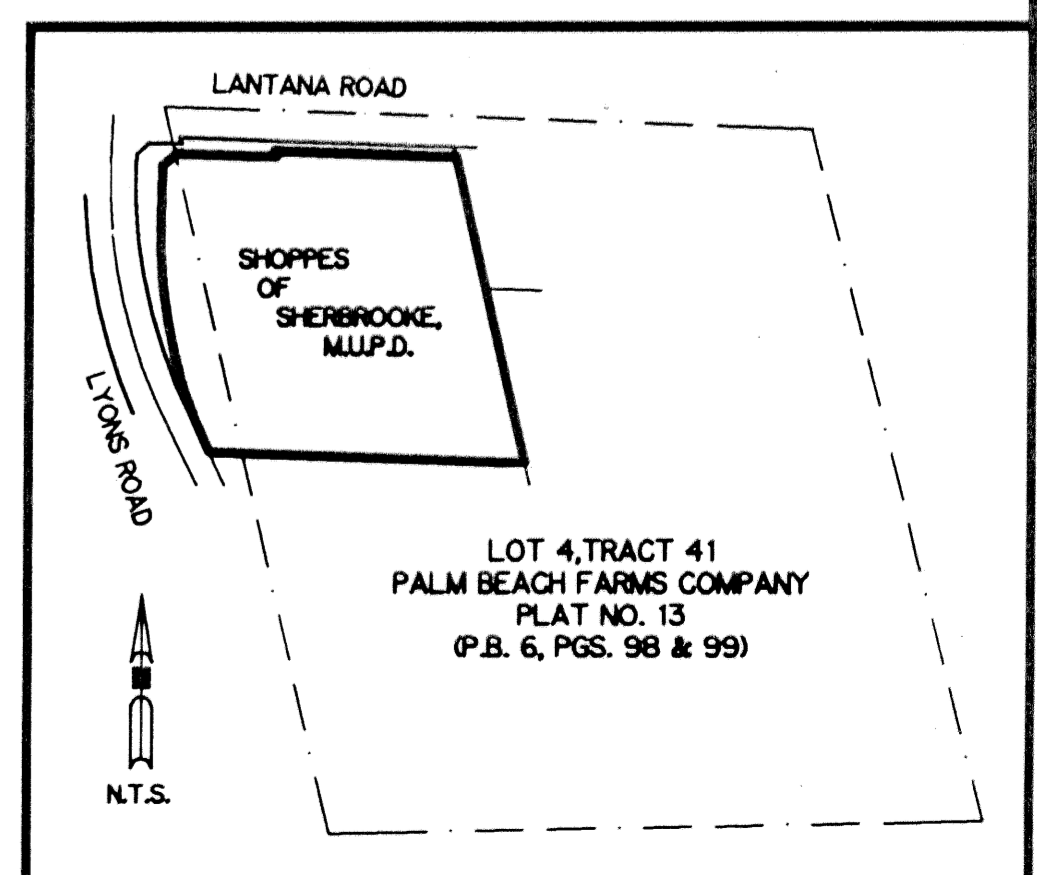
- - FND CONCRETE MONUMENT
- - SET PERMANENT REFERENCE MONUMENT, L.B. #6674
- - PERMANENT CONTROL POINT, L.B. #6674
- △ - DELTA ANGLE
- AC - ACRES
- B.E. - BUFFER EASEMENT
- CB - CHORD BEARING
- CH - CHORD
- C.M. - CONCRETE MONUMENT
- CL - CENTERLINE
- D.B. - DEED BOOK
- D.E. - DRAINAGE EASEMENT
- L - ARC LENGTH
- L.A.E. - LIMITED ACCESS EASEMENT
- L.M.A.E. - LAKE MAINTENANCE ACCESS EASEMENT
- L.M.E. - LAKE MAINTENANCE EASEMENT
- L.W.D. - LAKE WORTH DRAINAGE DISTRICT
- N.R. - NOT RADIAL
- N.T.S. - NOT TO SCALE
- O.R.B. - OFFICIAL RECORD BOOK
- P.B. - PLAT BOOK
- P.C. - POINT OF CURVATURE
- P.I. - POINT OF INTERSECTION
- PGS. - PAGES
- P.S.M. - PROFESSIONAL SURVEYOR AND MAPPER
- R - RADIUS
- RAD. - RADIAL
- R/W - RIGHT-OF-WAY
- S.F. - SQUARE FEET
- S.T. - SURVEY TIE
- U.E. - UTILITY EASEMENT
- P.O.B. - POINT OF BEGINNING
- P.O.C. - POINT OF COMMENCEMENT
- N 737648.0171 E 905258.2326 - DENOTES STATE PLANE COORDINATES

### NOTE:

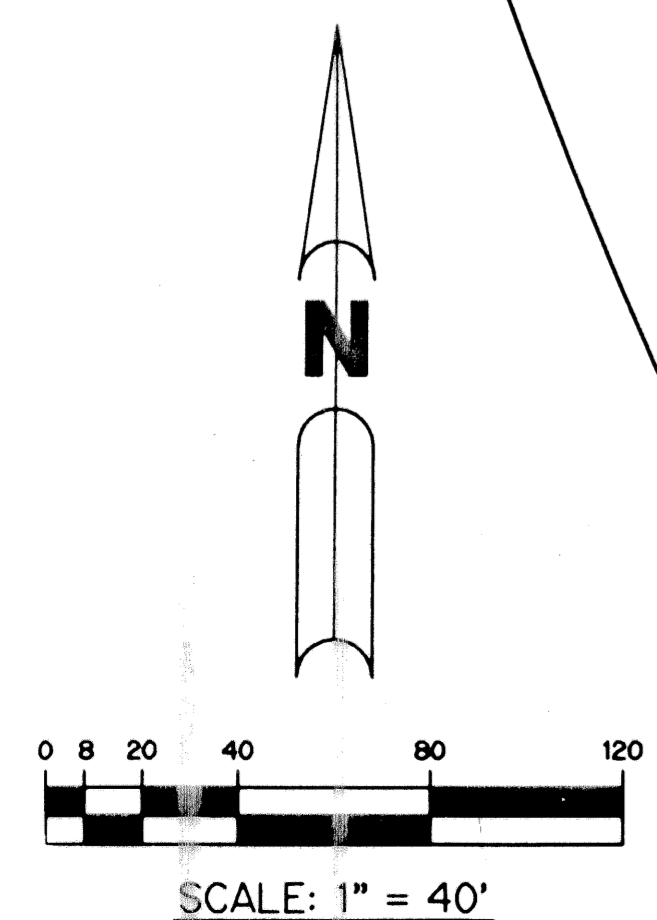
COORDINATES SHOWN ARE GRID COORDINATES  
 DATUM = NAD 83 (1990 ADJUSTMENT)  
 ZONE = FLORIDA EAST ZONE  
 LINEAR UNIT = U.S. SURVEY FEET  
 COORDINATE SYSTEM = 1983 STATE PLANE TRANSVERSE MERCATOR PROJECTION  
 ALL DISTANCES ARE GROUND  
 SCALE FACTOR = 1.0000222  
 ROTATION = 0°24'14" CLOCKWISE (GRID BEARING TO PLAT BEARING)

THIS INSTRUMENT PREPARED BY  
 PERRY C. WHITE, P.S.M. 4213, STATE OF FLORIDA  
 LAWSON, NOBLE AND WEBB, INC.  
 ENGINEERS PLANNERS SURVEYORS  
 420 COLUMBIA DRIVE  
 WEST PALM BEACH, FLORIDA 33409  
 LB-6674

FND. P.B.CO. BRASS DISK IN CONC. "SORIANO"  
 S89°34'07"E 2370.02' (GRID)  
 S89°34'07"E 2369.97' (GND)



SHERBROOKE GOLF AND COUNTRY CLUB  
 (P.B. 69, PGS. 196 - 197)



SUBDIVISION SHOPPES OF SHERBROOKE, M.U.P.D.  
 BOOK 97 PAGE 48 FLOOD MAP # 170A  
 FLOOD ZONE B ZONING MAP # 170A  
 QUAD # 49 ZIP CODE 33467  
 SE TALZ 740  
 FUD NAME